



1. I, Betty S. Shackleford, County Clerk, State of North Carolina, do hereby certify that the foregoing plat of land, together with the plat of subdivision of the same, as shown on the attached sheets, is a true and correct copy of the original as filed in my office on this 13th day of May, 1983, and that the same is in accordance with the provisions of Chapter 205, General Statutes of North Carolina, and that the same is a true and correct copy of the original as filed in my office on this 13th day of May, 1983, and that the same is in accordance with the provisions of Chapter 205, General Statutes of North Carolina.

1. A. Betty S. Shackleford, County Clerk, State of North Carolina, do hereby certify that the foregoing plat of land, together with the plat of subdivision of the same, as shown on the attached sheets, is a true and correct copy of the original as filed in my office on this 13th day of May, 1983, and that the same is in accordance with the provisions of Chapter 205, General Statutes of North Carolina, and that the same is a true and correct copy of the original as filed in my office on this 13th day of May, 1983, and that the same is in accordance with the provisions of Chapter 205, General Statutes of North Carolina.



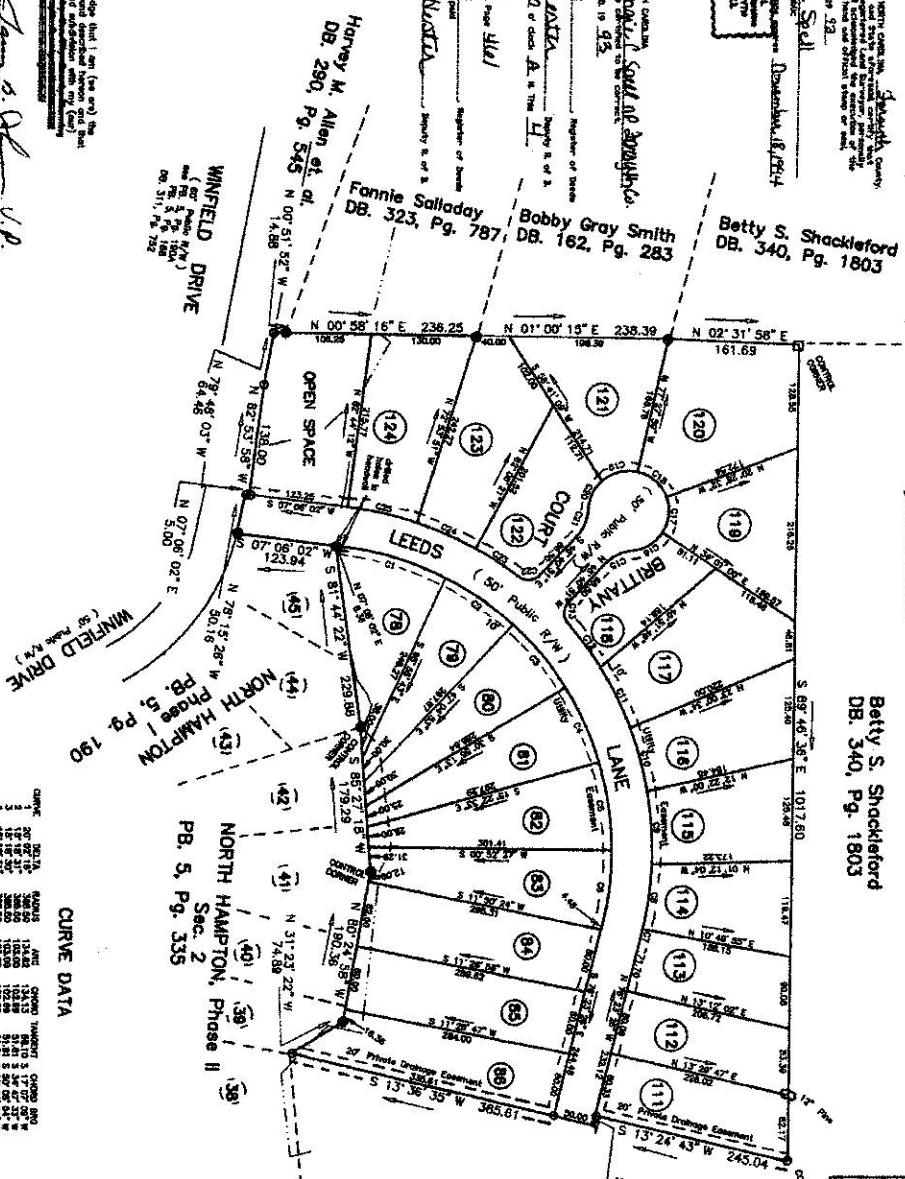
1. I, Betty S. Shackleford, County Clerk, State of North Carolina, do hereby certify that the foregoing plat of land, together with the plat of subdivision of the same, as shown on the attached sheets, is a true and correct copy of the original as filed in my office on this 13th day of May, 1983, and that the same is in accordance with the provisions of Chapter 205, General Statutes of North Carolina, and that the same is a true and correct copy of the original as filed in my office on this 13th day of May, 1983, and that the same is in accordance with the provisions of Chapter 205, General Statutes of North Carolina.

1. I, Betty S. Shackleford, County Clerk, State of North Carolina, do hereby certify that the foregoing plat of land, together with the plat of subdivision of the same, as shown on the attached sheets, is a true and correct copy of the original as filed in my office on this 13th day of May, 1983, and that the same is in accordance with the provisions of Chapter 205, General Statutes of North Carolina, and that the same is a true and correct copy of the original as filed in my office on this 13th day of May, 1983, and that the same is in accordance with the provisions of Chapter 205, General Statutes of North Carolina.

1. I, Betty S. Shackleford, County Clerk, State of North Carolina, do hereby certify that the foregoing plat of land, together with the plat of subdivision of the same, as shown on the attached sheets, is a true and correct copy of the original as filed in my office on this 13th day of May, 1983, and that the same is in accordance with the provisions of Chapter 205, General Statutes of North Carolina, and that the same is a true and correct copy of the original as filed in my office on this 13th day of May, 1983, and that the same is in accordance with the provisions of Chapter 205, General Statutes of North Carolina.

Betty S. Shackleford  
DB. 340, Pg. 1803

CERTIFICATE OF APPROVAL FOR RECORDING  
BY ENFORCEMENT OFFICER  
11-2-83  
DATE  
Enforcement Officer: [Signature]



The undersigned hereby acknowledges that I am (his or her) the (owner) of the property described in the foregoing plat of land, and that I have executed the same in accordance with the provisions of Chapter 205, General Statutes of North Carolina, and that the same is a true and correct copy of the original as filed in my office on this 13th day of May, 1983, and that the same is in accordance with the provisions of Chapter 205, General Statutes of North Carolina.

NOTE: The plat of land is a true and correct copy of the original as filed in my office on this 13th day of May, 1983, and that the same is in accordance with the provisions of Chapter 205, General Statutes of North Carolina, and that the same is a true and correct copy of the original as filed in my office on this 13th day of May, 1983, and that the same is in accordance with the provisions of Chapter 205, General Statutes of North Carolina.

TOTAL AREA  
12.854 AC. (COOR.)

CURVE DATA

CHORD	ARC	CHORD BEARING	CHORD ANGLE	CHORD DISTANCE
1	1.0000	N 89.5618° E	1.5708	1.0000
2	2.0000	N 87.1342° E	3.1416	2.0000
3	3.0000	N 84.7066° E	4.7124	3.0000
4	4.0000	N 82.2790° E	6.2832	4.0000
5	5.0000	N 79.8514° E	7.8540	5.0000
6	6.0000	N 77.4238° E	9.4248	6.0000
7	7.0000	N 74.9962° E	10.9956	7.0000
8	8.0000	N 72.5686° E	12.5664	8.0000
9	9.0000	N 70.1410° E	14.1372	9.0000
10	10.0000	N 67.7134° E	15.7080	10.0000
11	11.0000	N 65.2858° E	17.2788	11.0000
12	12.0000	N 62.8582° E	18.8496	12.0000
13	13.0000	N 60.4306° E	20.4204	13.0000
14	14.0000	N 58.0030° E	21.9912	14.0000
15	15.0000	N 55.5754° E	23.5620	15.0000
16	16.0000	N 53.1478° E	25.1328	16.0000
17	17.0000	N 50.7202° E	26.7036	17.0000
18	18.0000	N 48.2926° E	28.2744	18.0000
19	19.0000	N 45.8650° E	29.8452	19.0000
20	20.0000	N 43.4374° E	31.4160	20.0000
21	21.0000	N 41.0098° E	32.9868	21.0000
22	22.0000	N 38.5822° E	34.5576	22.0000
23	23.0000	N 36.1546° E	36.1284	23.0000
24	24.0000	N 33.7270° E	37.6992	24.0000

MAP OF  
NORTH HAMPTON  
PHASE III

SCALE IN FEET

FOR THE NEW  
NORTH CORPORATION

RECORDED IN BOOK 27, PAGE 1803

STATE SURVEYING CO., INC.

271-83-38

